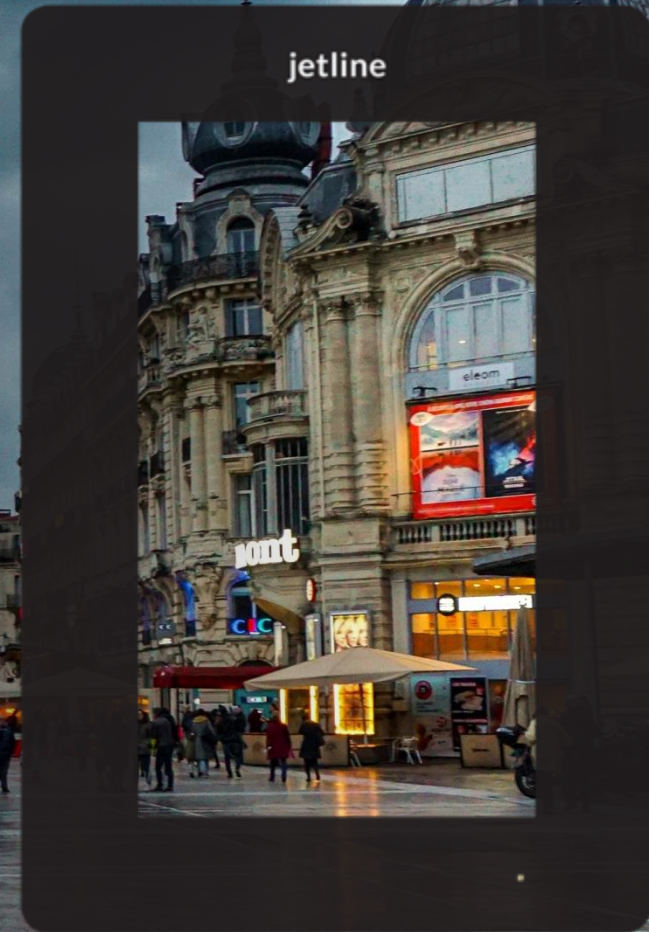




Jet Line:  
we **create space**  
for communication



# Who we are



Jet Line has been providing its services for **over 30 years**. We specialize in effective communication in public spaces. We run nationwide OOH and Digital OOH campaigns that generate increased profits for brands. In the city, on country roads – wherever you need it!

We assist clients with campaign planning, provide bespoke design services, specialize in the production of posters and unique spatial elements, handle their installation, and monitor advertisements. We advise, suggest alternatives, and inspire.





# Our products



MORE





# In numbers:

570

*MORE* Screens

101

*MyLED* Screens

380

*Motorway*  
Billboards 12x4 m

8

*MOBIJet*  
Mobile Billboard Vehicles



# MORE Digital OOH

MORE stands out by being the most seamlessly integrated DOOH screen network. Our strategically placed screens in shop windows, service points, restaurants, and other gastronomic venues, ensure maximum visibility and direct engagement with pedestrian traffic.

**Now available for programmatic purchase**, unlocking unparalleled reach and efficiency to enhance your campaigns.



# 570

MORE  
SCREENS



PROGRAMMATIC

Purchase via a programmatic model

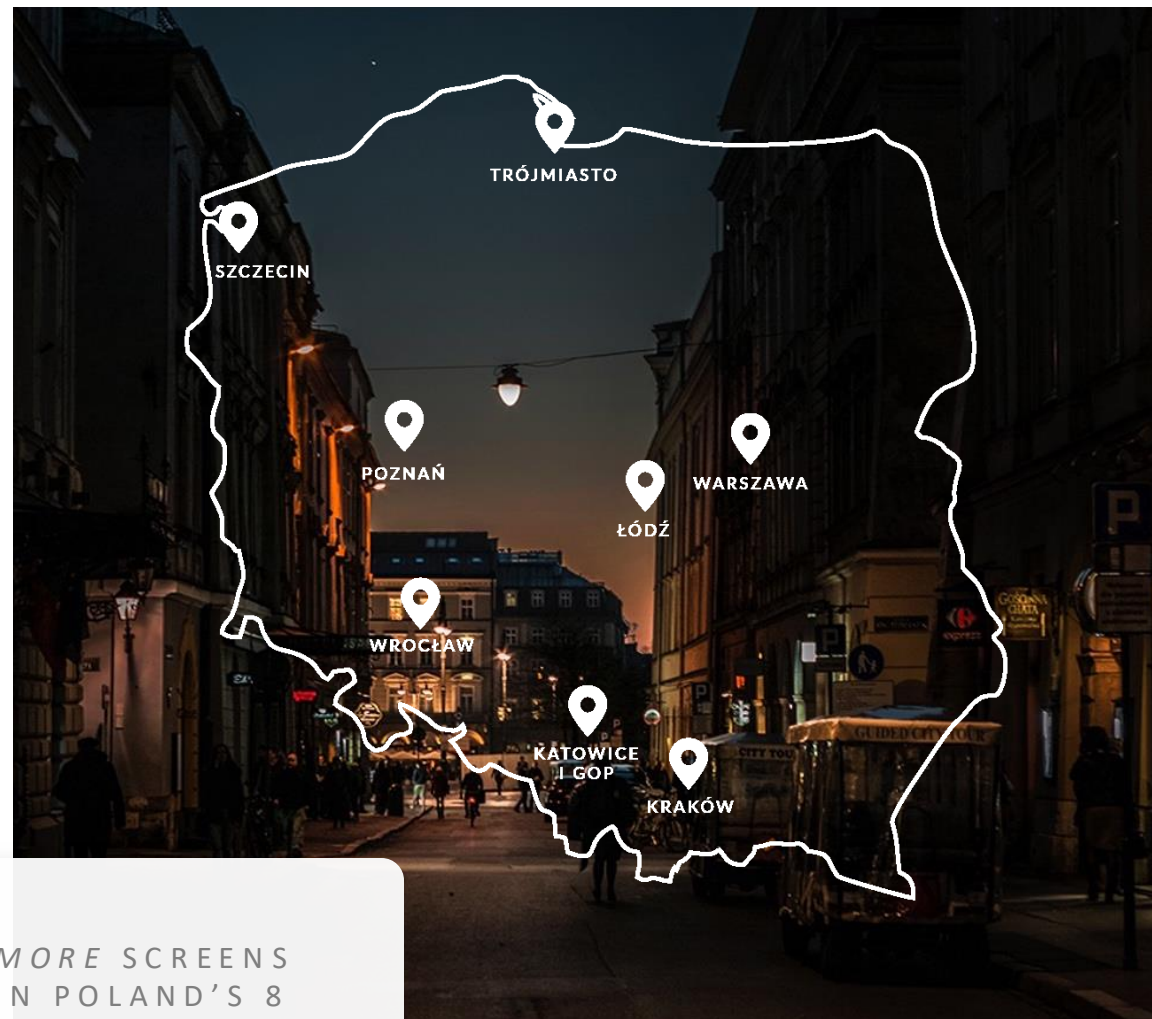


# The G8 Poland's eight largest cities

MORE is the only digital out-of-home (DOOH) network in Poland that is this coherently organized. Our screens are placed in high-traffic locations in Poland's biggest cities.

570

MORE SCREENS  
IN POLAND'S 8  
BIGGEST CITIES





# MORE where brands meet people

We use technology to reach the  
people you want to reach.



# ARA technology

ARA is an innovative system for gathering and analyzing data collected from the environment.

We use a proprietary ARABOX device featuring a set of sensors which are used to collect information about people in the vicinity, including: movement direction, interest analysis and demographic profile.

## DATA ANALYSIS

### age

IN 4 CATEGORIES:

0 - 18

18 - 34

35 - 54

54+

### sex

Female

Male

## PRIVACY PROTECTION

ARA works in accordance with the provisions of the GDPR. We respect the privacy of all recipients.



# ARA × MORE

## how it works

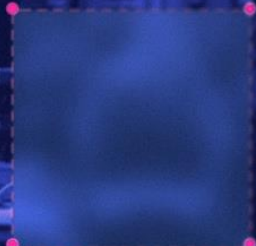
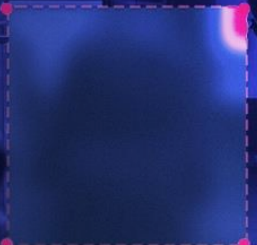
We are able to accurately determine the number of people moving within range of our device and identify the direction, frequency and manner of their movement.





# 250 million impressions

/MONTH





# Carbon Footprint

Jet Line has developed tools for calculating the carbon footprint of advertising campaigns mounted **on traditional Motorway 12×4 m billboards (OOH) and digital MORE screens (DOOH).**

These are the first calculators of their kind in Poland for out-of-home advertising campaigns.

Our calculators are based on a **“gate to grave” approach**, covering the full lifecycle of a campaign — from media production, to installation, operation, transport, monitoring, and recycling.

They offer clear insights into the environmental impact of the campaigns we deliver, helping our clients make better-informed decisions and initiate offsetting actions where appropriate.



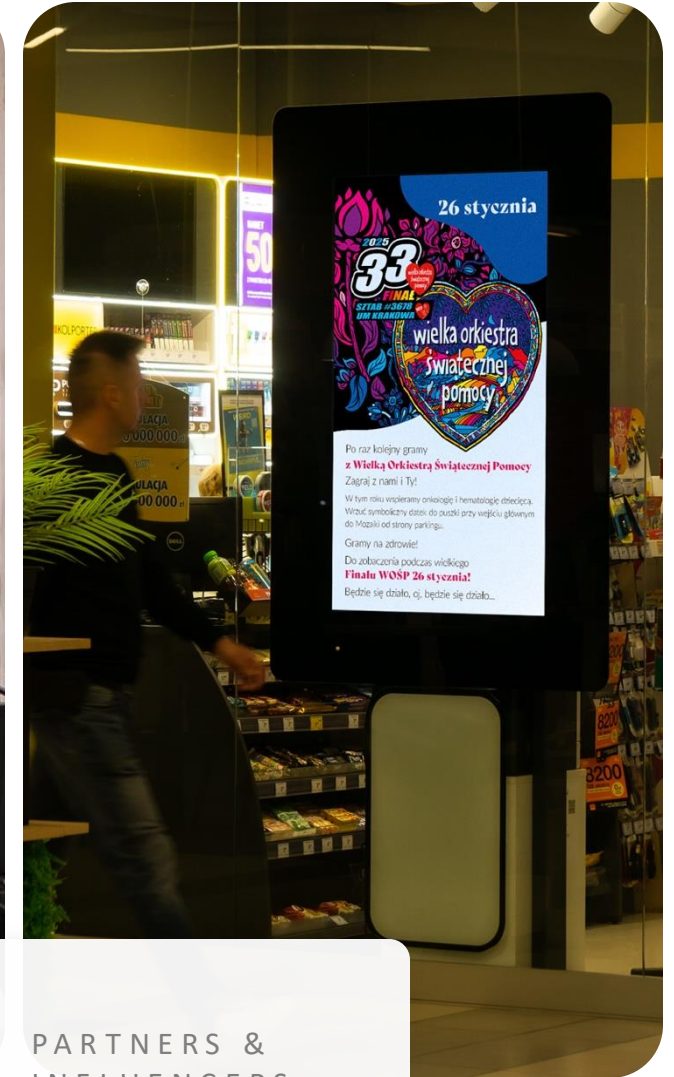
1st  
IN POLAND

# More Influence

Our screens are not just advertising, they are...  
MORE. We provide a space for communication.

We proudly **support artists, social initiatives, events and independent Polish creators** by giving them visibility in the public space.

We also offer our OOH media to spread the word about charitable initiatives. For example, we are proud to support the WOŚP Charity — a nationwide initiative that helps children and seniors access life-saving medical care.



OVER  
**230**

PARTNERS &  
INFLUENCERS





The future  
starts now







Let's **create space**  
for communication

